

II

Trombone II

Andante sostenuto e misterioso ♩ = 46

3 6

11 19 20 4

24 21 3 3

32 22 4

39 23 24 7 25 2

51 26 ♩=56 ♩=52

56 *sf* poco allarg. ---al 27 Tempo I ♩=46 *f* *sf* sost.----

59 a tempo ♩=♩ *ff* *p*

63 28 *ff* *f*

67 29 *ff* *ff* 8

80 30 31 5 8

Trombone II

III

Allegro con brio, ma non troppo mosso ♩ = 110

13 32 17 33 15

46 34 6 2

60 35 ♩=120 6

73 36 5 10

93 37 2 7

106 38 12 39 15 poco meno 5

138 40 Meno mosso ♩=70 A tempo ♩=110 Meno mosso ♩=70

146 3 A tempo ♩=110 Meno mosso ♩=70 3

155 A tempo ♩=110 Meno mosso ♩=70 A tempo ♩=110

162 41 Meno mosso ♩=70 12

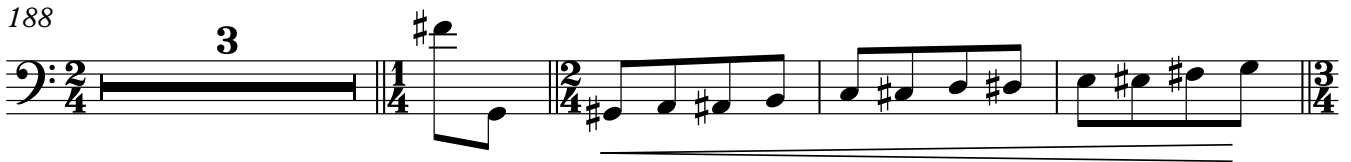
178 42 A tempo ♩=110 5 3

pp *f* *p* *mp* *f*

Trombone II

2

188



195

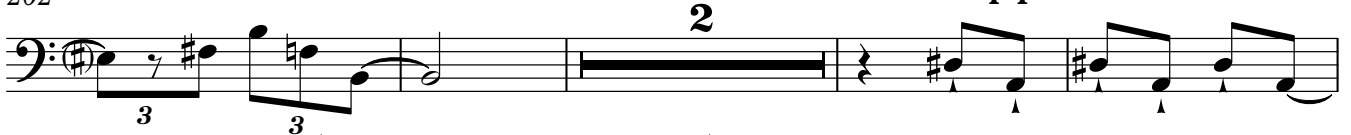
43 **Meno mosso**, rubato ♩=80



202

f f

Tempo primo ♩=110

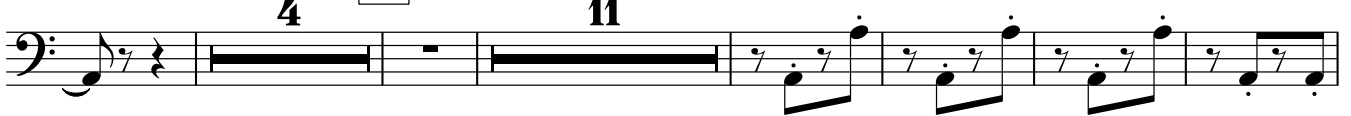


Meno mosso ♩=80

Tempo primo ♩=110

208

44

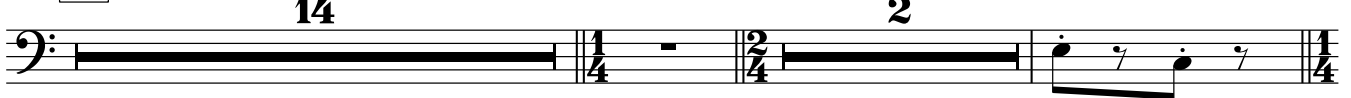


229

mp



238 45



256



264 46



47 **Meno mosso** ♩=85

♩=80

Ben moderato ♩=70 e - si - tan - do

278

48

49



esitando, poco accel. al Tempo I

animato ♩=110

poco a poco acceler.

298

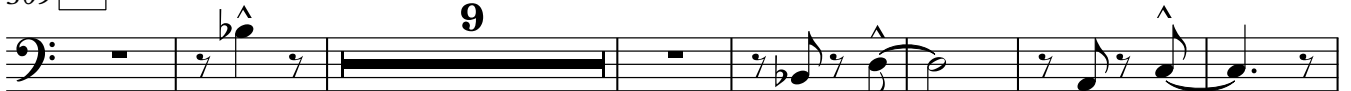
50



309 51

con fuoco ♩=120

♩=125



f

mp

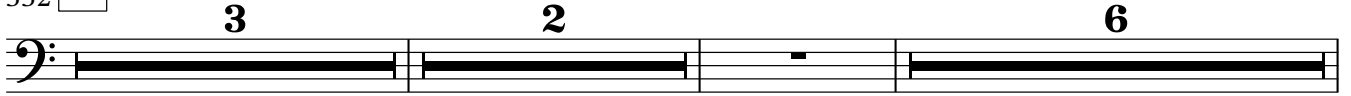
Trombone II

3

325



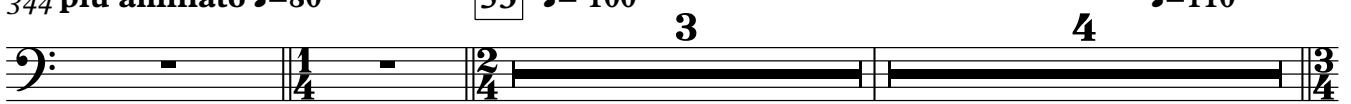
332 **52** **Meno mosso** ♩=70 **poco acceler.** **poco allarg. a tempo** ♩=70



344 **piu animato** ♩=80

53 ♩=100

♩=110



353

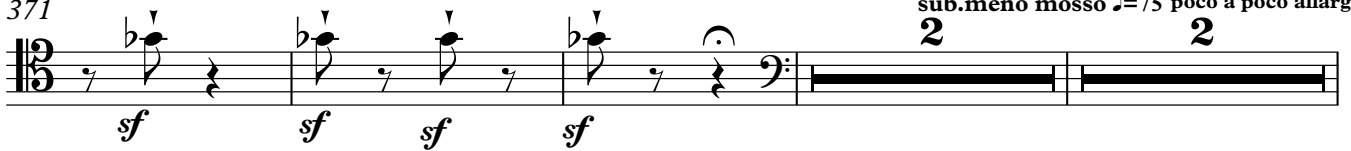
*mp*

363 **54** ♩=120

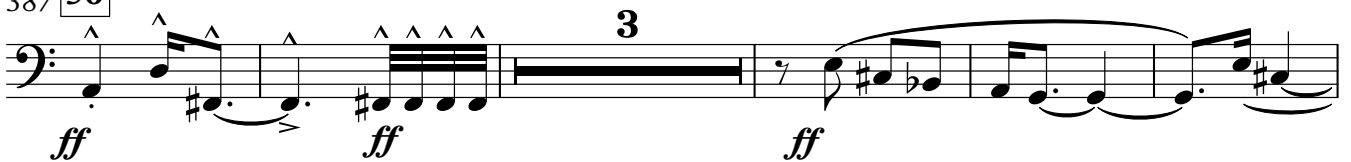
*mp*

371

sub.meno mosso ♩=75 **poco a poco allarg.**

*sf**sf**sf**sf*

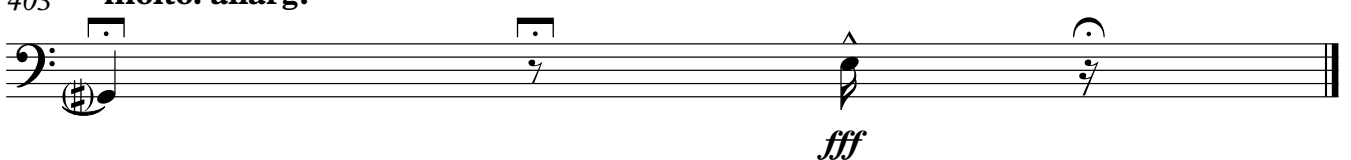
378 **55** **molto meno mosso** largamente ♩=50 **In 4** ♩=45 **In 2** ♩=50

*ff*387 **56***ff**ff**ff*

395 **57** **In 4** ♩=40

*sffz**ffp**fff**sf**sf**sf**sf**sf*

403 **molto. allarg.**

*fff*